

ActiveVisorTM

Centralized Management Console
for ActiveImage Protector

ActiveVisor Ver. 7

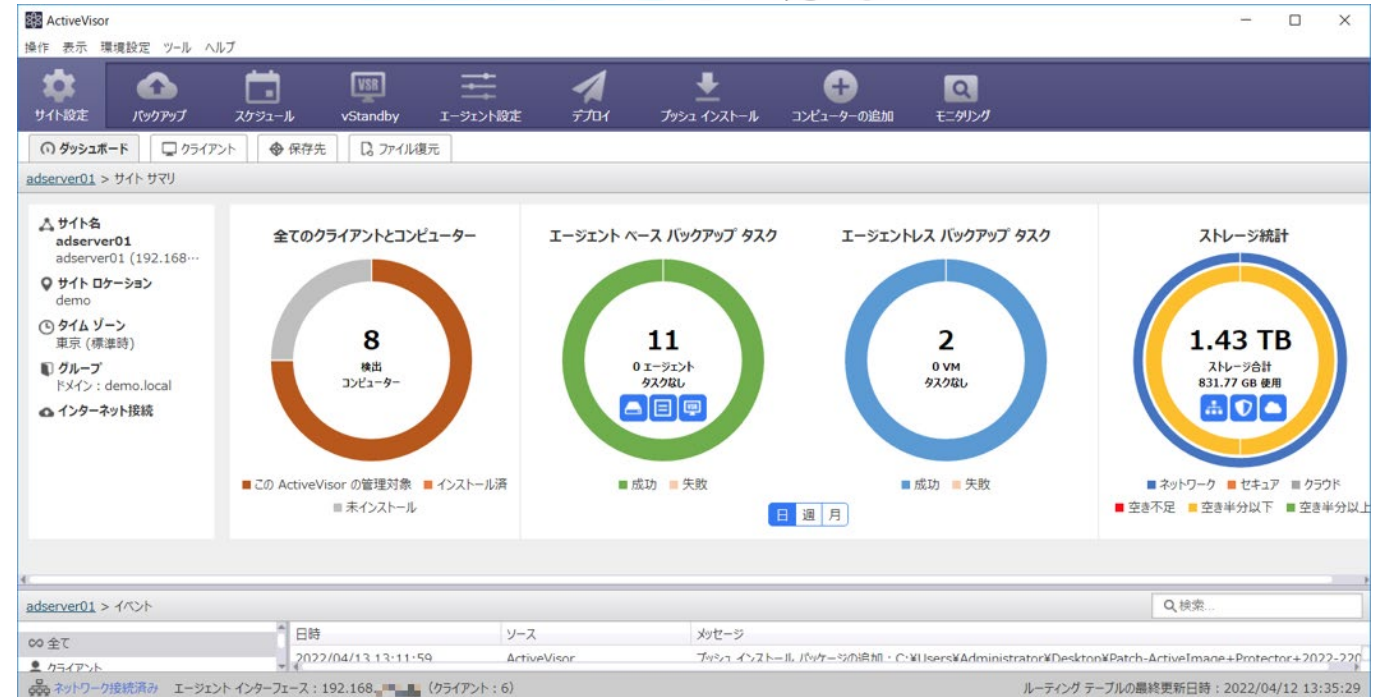
~ Product Summary ~

June 9, 2022

Actiphy Inc.

1. New Features
2. Monitoring Feature
3. Push Install / Deploy Task
4. Direct operation of agent
5. Others

ActiveVisor™



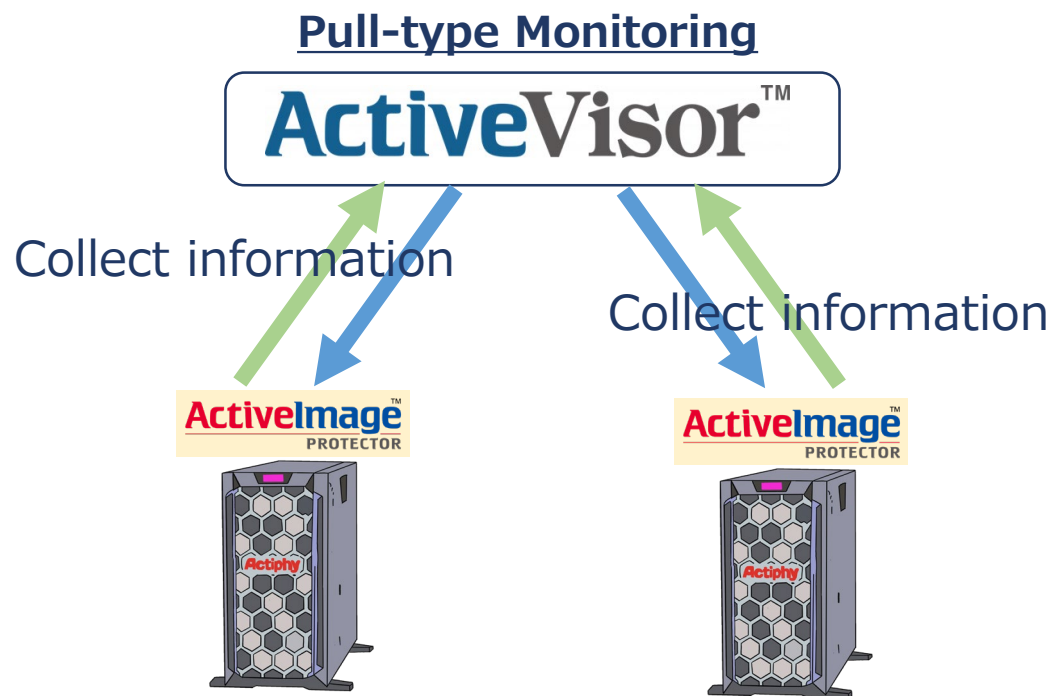
Centralized Management Console for ActiveImage Protector by monitoring overall system protection of the backup source PCs

- Enhanced method of real-time monitoring the backup status of client PCs**
- Support for ActiveImage Protector 2022**
- Create File Backup task**
- Create Backup Task / Template by specifying cloud storage as the destination**
- Push installation of patch program**
- Launch and operate ActiveImage Protector's remote management console**
- Remote operation of RescueBoot (boot environment)**

Enhanced the method from pull to push for monitoring the backup status of backup tasks.

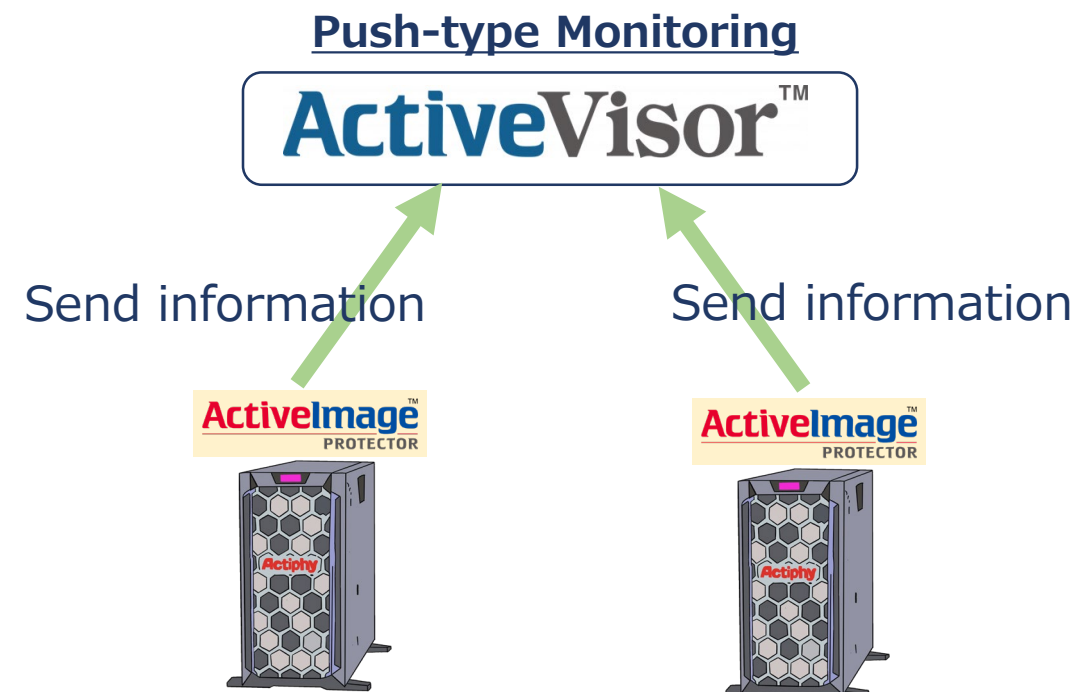
Conventional Method

By regularly collecting information from distributed agents on client machines over the network, ActiveVisor monitors **the information including backup status**.



Enhanced Method

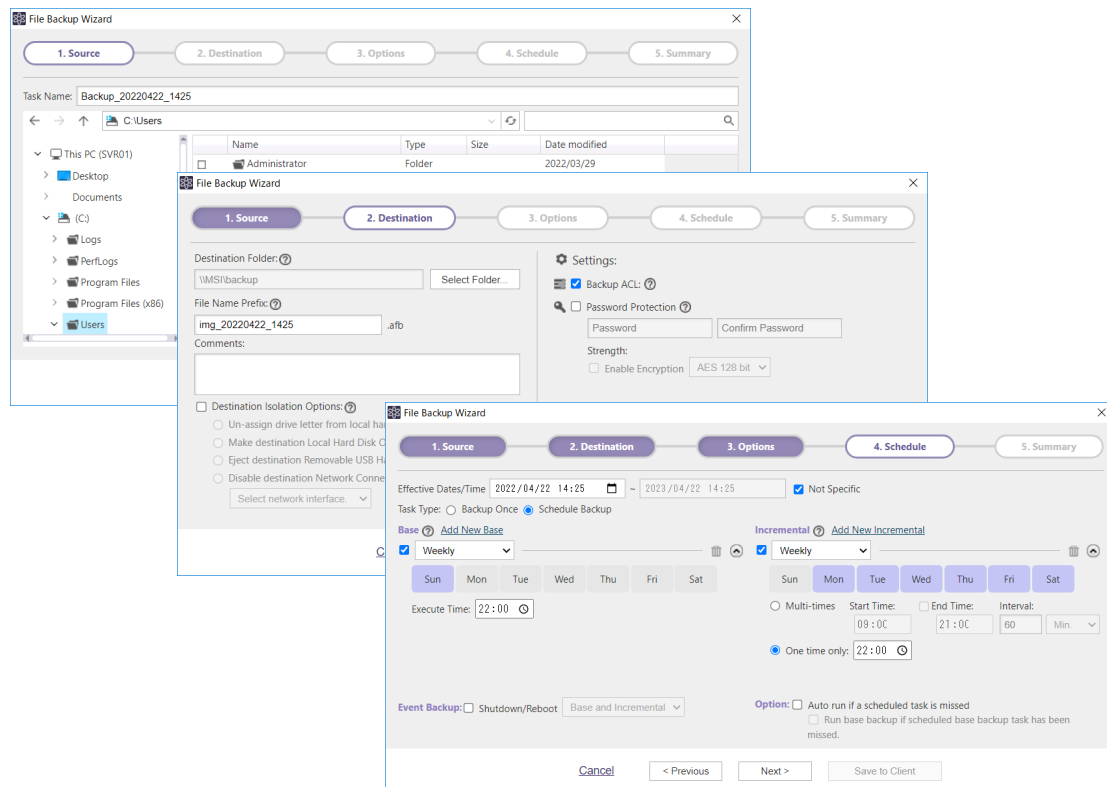
ActiveImage Protector agents on client computers **push the client's information to ActiveVisor which only receives the information** and does not send or obtain extra information, reducing the data communication traffic over the network.



Create File Backup task

ActiveVisor now includes task creation of file-by-file backup tasks for managed clients by directly operating agents.

File Backup Wizard



The File Backup Wizard consists of five steps: 1. Source, 2. Destination, 3. Options, 4. Schedule, and 5. Summary.

Step 1: Source shows the task name "Backup_20220422_1425" and the source path "C:\Users".

Step 2: Destination shows the destination folder "VMSI\backup" and file name prefix "img_20220422_1425".

Step 3: Options shows settings for Backup ACL, Password Protection, and Encryption (AES 128 bit).

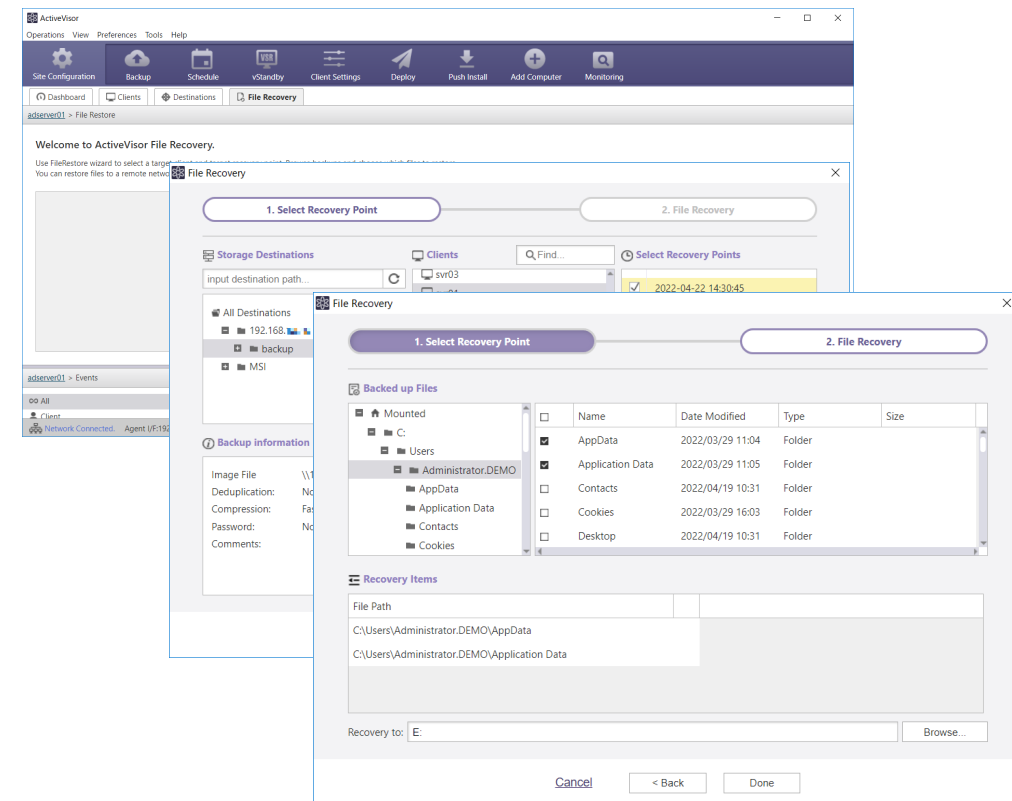
Step 4: Schedule shows the task type as "Backup Once" and the schedule as "Weekly" starting on "Sun" at "22:00".

Step 5: Summary shows the final task configuration.

Create File Recovery task

You can select a file / folder from an agent-based / agentless backup image file to restore to a file/folder you specify.

File Recovery Wizard



The File Recovery Wizard consists of two steps: 1. Select Recovery Point and 2. File Recovery.

Step 1: Select Recovery Point shows the "Storage Destinations" and "Clients" tabs. The "Clients" tab shows a list of clients, including "Administrator.DEMO".

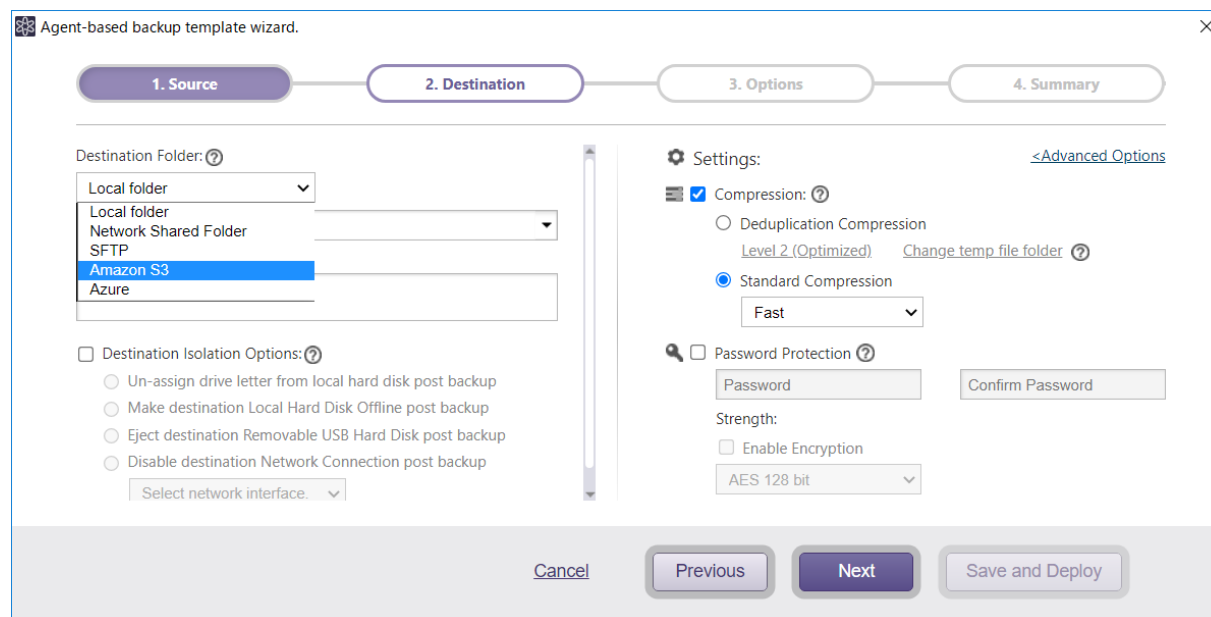
Step 2: File Recovery shows the "Backed up Files" list with columns for Name, Date Modified, Type, and Size. The list includes folders like "AppData", "Application Data", "Contacts", "Cookies", and "Desktop".

The "Recovery Items" section shows the file path "C:\Users\Administrator.DEMO\AppData" and the recovery target "E:". The "Recovery to" field is set to "E:".

Create tasks / templates to back up directly to cloud storage

Use ActiveVisor to configure tasks to back up directly to cloud storage, i.e., Amazon S3, Microsoft Azure Storage, and SFTP server.

Specify the destination



Agent-based backup template wizard.

1. Source — 2. Destination — 3. Options — 4. Summary

Destination Folder: Local folder Local folder Network Shared Folder SFTP Amazon S3 Azure

☐ Destination Isolation Options: Un-assign drive letter from local hard disk post backup Make destination Local Hard Disk Offline post backup Eject destination Removable USB Hard Disk post backup Disable destination Network Connection post backup Select network interface.

Settings: [<Advanced Options](#)

☒ Compression: Level 2 (Optimized) Change temp file folder

☐ Deduplication Compression

☒ Standard Compression Fast

☐ Password Protection Password Confirm Password

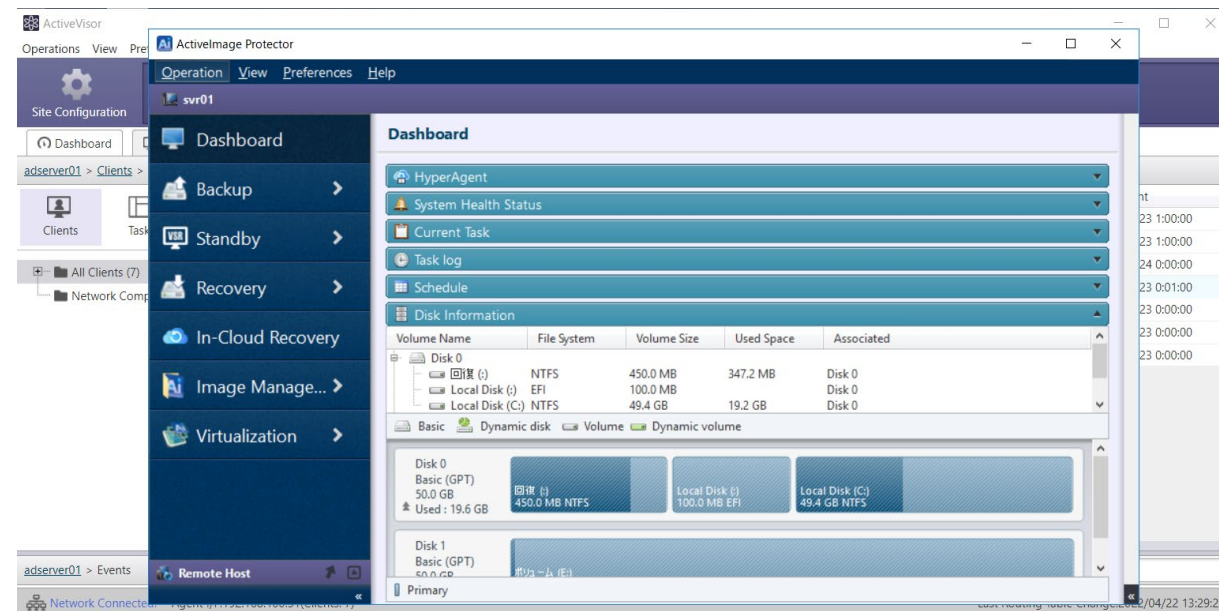
Strength: ☐ Enable Encryption AES 128 bit

Cancel Previous Next Save and Deploy

Operate from remote console

ActiveVisor can launch and use ActiveImage Protector's remote console.

Launch remote console over network



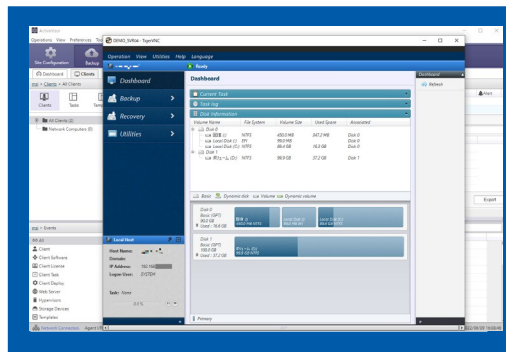
ActiveVisor enables to remotely operate RescueBoot boot environment on Windows / Linux

Remotely boot up RescueBoot from ActiveVisor

ActiveImage Protector comes with RescueBoot feature enabling system recovery in the event of emergency without the use of external device. **ActiveVisor enables to remotely boot up RescueBoot boot environment on Windows / Linux system.**

Remote Site

ActiveVisor™



Remotely boot up RescueBoot
boot environment

Remotely access RescueBoot boot environment
For system recovery

ActiveImage™
PROTECTOR



Data
System

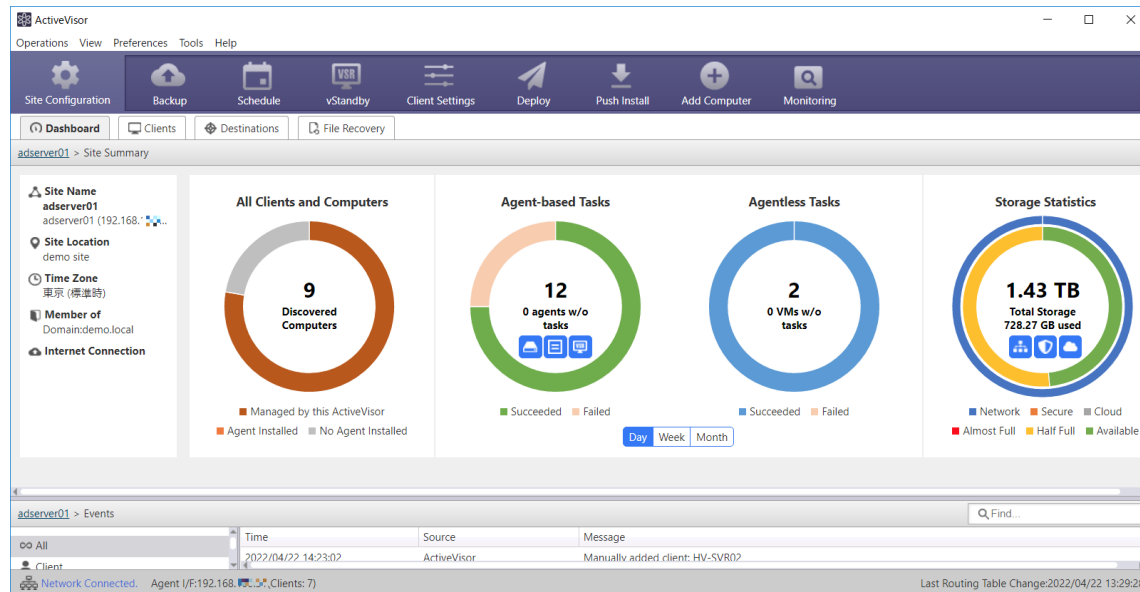
Recovery



Built-in dashboard provides visual representation of status data

Dashboard window provides real time monitoring of the status of back task execution on client PCs, insufficient space for storage management, etc.

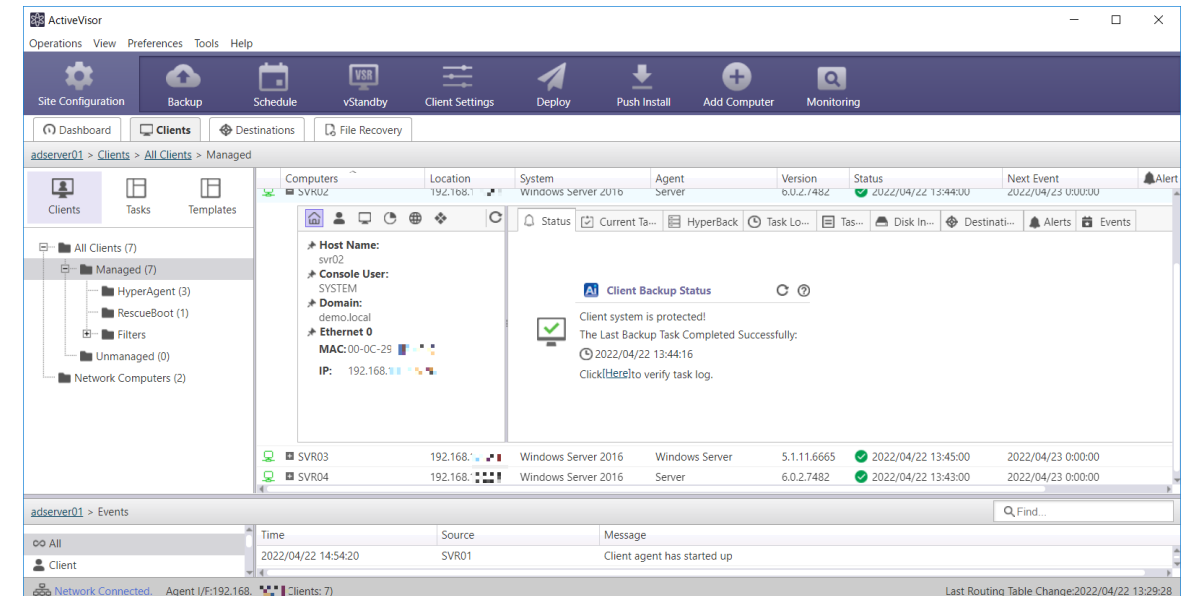
Dashboard window provides real time monitoring



Real-time monitoring of client PCs

ActiveVisor provides visual representation of statistic data and real-time monitoring of the backup status of client PCs. Alert feature provides visual indication of a task failure, indicating the status in red, etc. By regularly collecting information from distributed agents on client machines over the network, ActiveVisor displays task execution logs for managed clients.

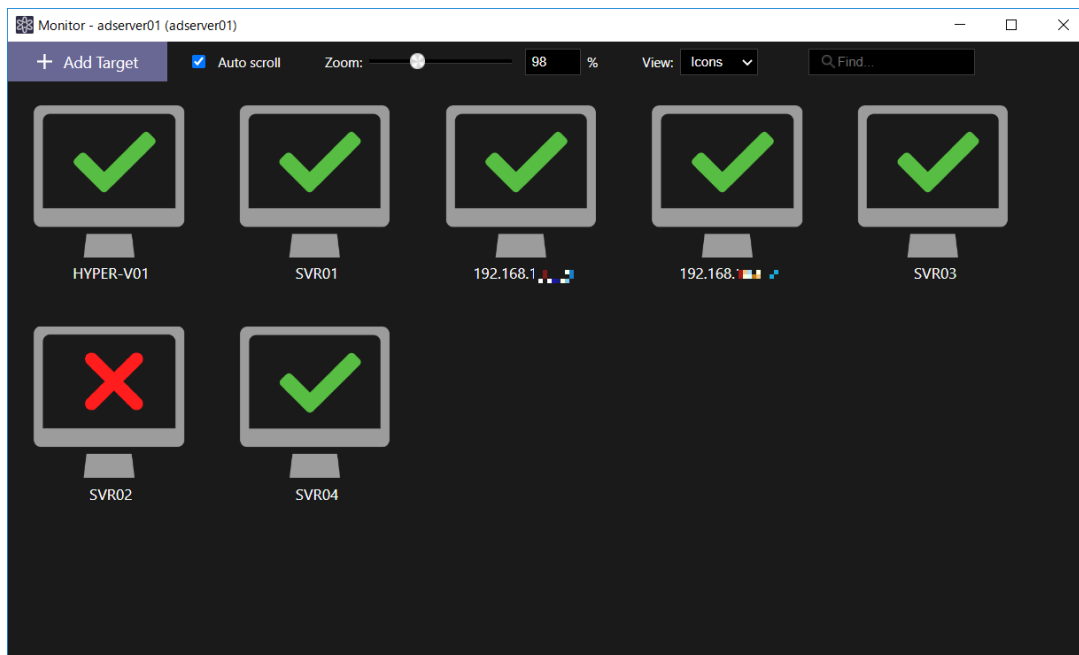
Real-time monitoring of client PCs



Monitor window

Monitor window provides visual indication of successful / failed task execution status and alert indication. The GUI displays a table view illustrating task failure occurred in red on which client, successful task execution in green, non-activated agent in orange.

Monitor window



Monitor the managed client information

Monitoring Details

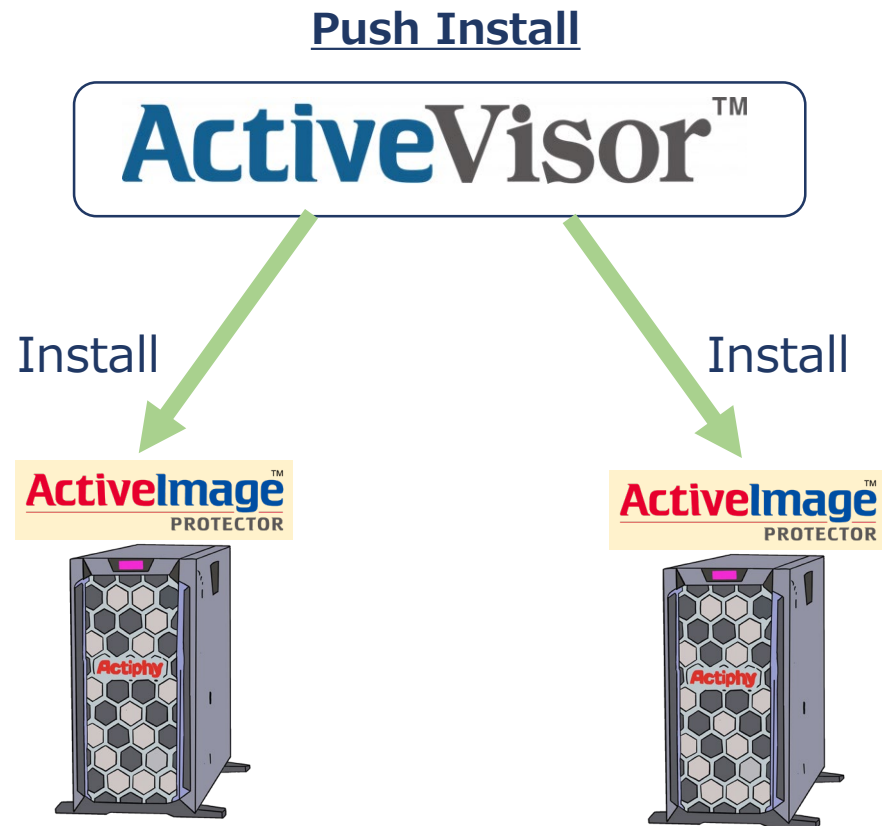
Monitoring Detail

Detailed Information

- Inventory information of client PCs
- Task Log
- Task Settings
- Disk information
- Destination storage management
- Alert
- Event

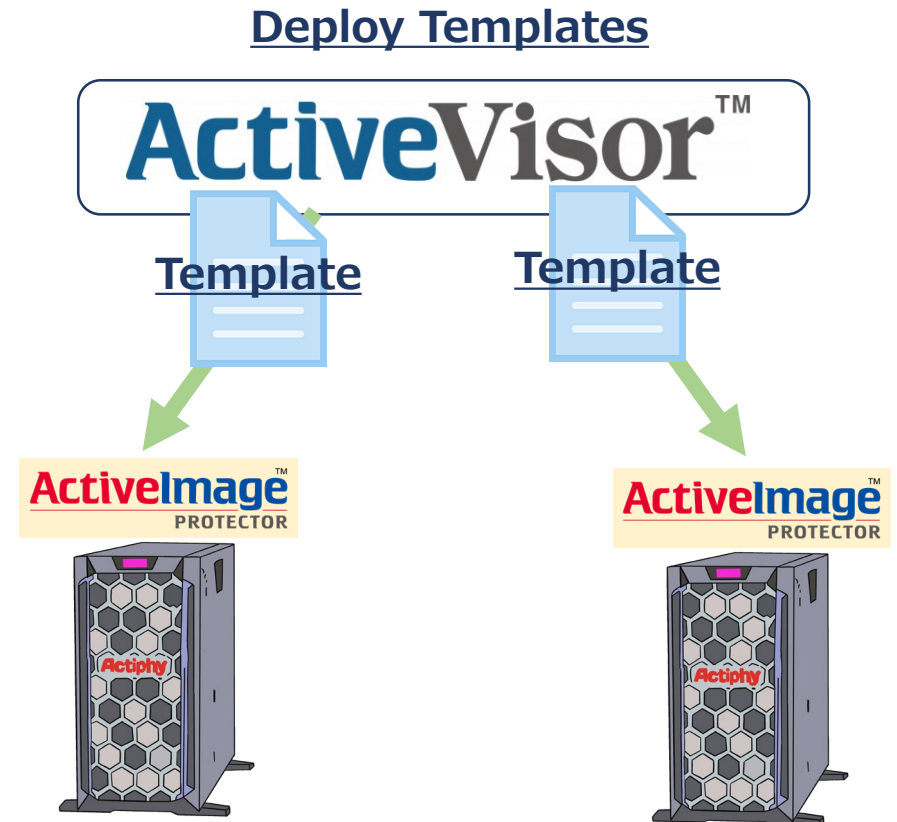
Push Install

ActiveVisor enables push installing ActiveImage Protector software patches and updates to clients in a batch from a single location.



Deploy Task

ActiveVisor deploys templates of pattern-based backup settings, schedules, agent settings to clients in a batch.



ActiveImage Protector Versions and Supported Features

| ActiveVisor Features | AIP 2022 Server Build 7292 or later | AIP 2018 Server Build 6454 or later | AIP 2022 Linux Build 7292 or later | AIP 2018 Linux Build 6454 or later |
|-------------------------------|--|--|---------------------------------------|---------------------------------------|
| Monitoring | ○ | ○ | ○ | ○ |
| Remote Management Console | ○ | × | ○ | × |
| Push Install | ○ | △(*1) | × | × |
| Deploy templates | ○ | × | × | × |
| Create backup task | ○ | ○ | × | × |
| Re-boot agent | ○ | ○ | × | × |
| Obtain support information | ○ | ○ | × | × |
| Activation | ○ | ○ | ○ | ○ |
| Command line interface | ○ | ○ | ○ | ○ |
| Change credential information | ○ | ○ | ○ | ○ |
| Reboot system | ○ | ○ | ○ | ○ |
| Shut-down | ○ | ○ | ○ | ○ |
| RescueBoot | ○ | × | ○ | × |

* 1 : Upgrade installation only to ActiveImage Protector 2022 is supported.

➤ Supported agent version

- ActiveImage Protector 2022
 - Agent version 6.0.0.7292 or later
- ActiveImage Protector 2018
 - Agent version 5.1.11.6454 or later

➤ Recommended environment

- Active Directory domain environment (*1)

*1 : Auto Discovery supports only member computers in domain. You need to enter credential information in [Add Computer] for the respective computers in workgroup to add.



For your inquiry, please contact:
Actiphy Inc.
E-mail: global-sales@actiphy.com
Tel: +81-3-5256-0877



www.actiphy.com