

A decorative graphic on the left side of the slide, featuring a blue and white geometric design with various icons (gear, envelope, refresh, people, atom, document, keyboard) connected by lines, suggesting a network or system architecture.

ActiveImageTM 2022 PROTECTOR

ActiveImage Protector 2022 IT Pro

System Protection Solution

designed for IT professionals

~ Product Summary ~

March 9, 2022

Actiphy Inc.

System Protection Solution designed for IT professionals

- 1 . What is ActiveImage Protector 2022 IT Pro?
- 2 . Benefits of ActiveImage ActiveImage Protector 2022 IT Pro
 - Backup / Recovery
 - Incremental Backup
 - A variety of Storage Media are supported
 - Boot environment builder without need for installation of Windows ADK
 - Disk-To-Disk Copy feature
 - Virtual conversion utility
- 3 . Main Features
 - Backup / Recovery

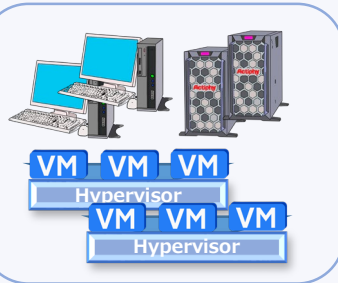
System Protection Solution designed for IT professionals

- One-year subscription license per technician allowing to backup and restore an unlimited number of systems
- Without installation of the programs on physical / virtual machines, enables to take a hot backup of the live operating system. **NEW**
- Supported public cloud storage services include S3 compatible object storage. SFTP protocol and LTO tape device are also supported. **NEW**

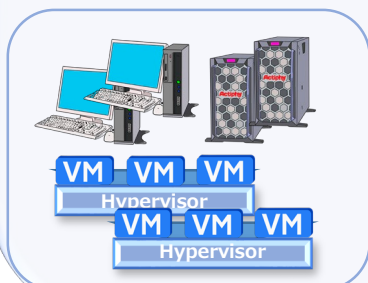
ActiveImage Protector IT Pro License

One-year subscription license per technician, allowing to backup unlimited number of systems

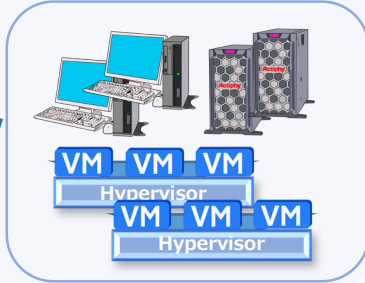
A Company



B Company



C Company



System Integrator

New features of ActiveImage Protector 2022 IT Pro

- Supported public cloud storage services include S3-compatible object storage
- LTO tape devices supported as the destination storage
- Support for SFTP servers providing secure communication
- Support for incremental backup
- Boot Environment Builder without need for installation of Windows ADK
- Disk-to-disk copy
- Windows Server 2022, Windows 11 are supported.

* As for the summary of the new main features, please refer to "ActiveImage Protector 2022 Summary of New Features."

Without installation of ActiveImage Protector on physical / virtual machines, enables to take a hot backup of the live operating system

Run execution file of IT Pro to back up

Without installation of ActiveImage Protector on physical / virtual machines, run execution file (ITPRO.exe) of IT Pro on live Windows server and back up system and data.(*1)

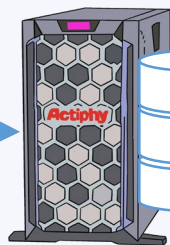
For example, when doing system maintenance, you can take a hot-imaging backup of a live server.

Run exe file of IT Pro to back up system and data

ActiveImage™
PROTECTOR



Run IT Pro
on Windows



Back up



* Linux system supports cold backup in ActiveImage Protector boot environment.

Easy-to-use controls of backup and restore operation

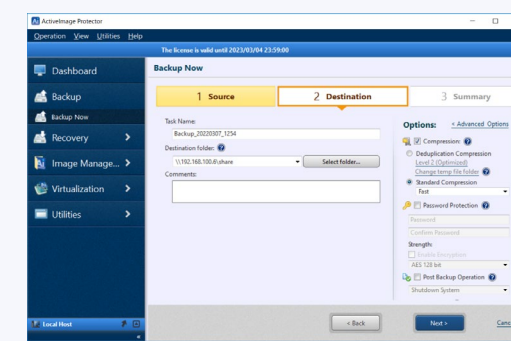
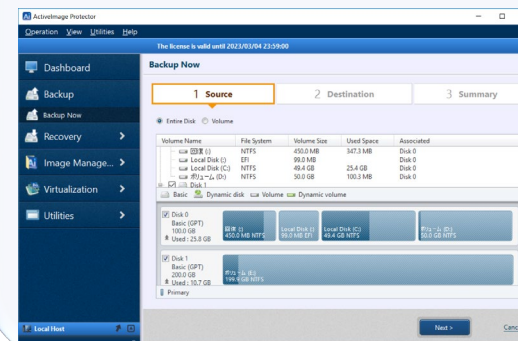
Intuitive and user friendly management console provides easy-to-use controls of backup settings and recovery operation. **Even an in-experienced system manager can easily start backup operation.** File / Folder Recovery is also supported.

Wizard-driven interface guides you through configuring backup settings

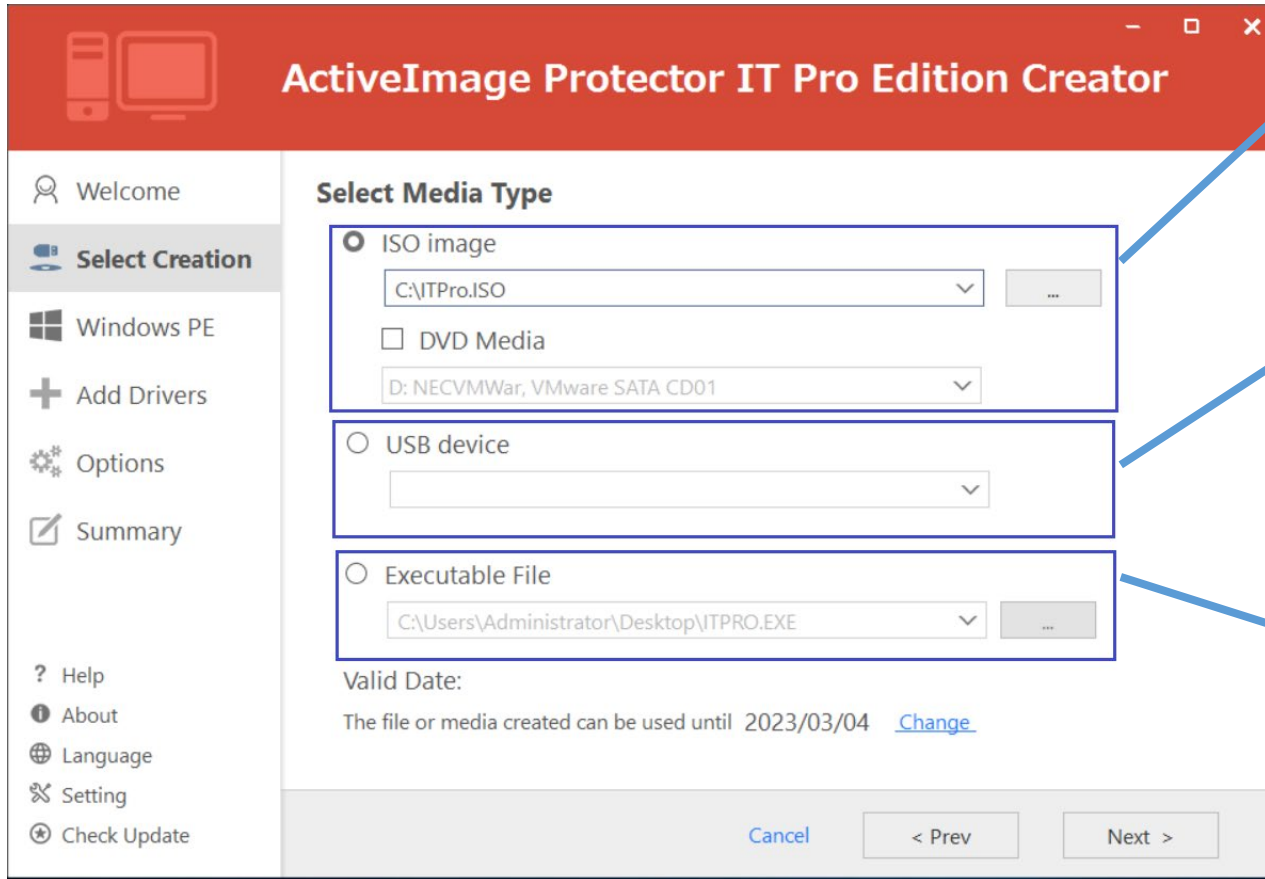
バックアップ対象の
ディスクを選択



バックアップ
保存先の指定



Wizard-driven interface guides you through creation of IT Pro exe file and boot environment.



The screenshot shows the 'ActiveImage Protector IT Pro Edition Creator' window. On the left is a sidebar with navigation options: Welcome, Select Creation (highlighted), Windows PE, Add Drivers, Options, Summary, Help, About, Language, Setting, and Check Update. The main area is titled 'Select Media Type' and contains four radio button options: 'ISO image' (selected), 'DVD Media', 'USB device', and 'Executable File'. Each option has a text field and a browse button (...). The 'ISO image' field contains 'C:\ITPro.ISO'. The 'DVD Media' field contains 'D: NECVMWar, VMware SATA CD01'. The 'Executable File' field contains 'C:\Users\Administrator\Desktop\ITPRO.EXE'. Below these options, it says 'Valid Date: The file or media created can be used until 2023/03/04' with a 'Change' link. At the bottom are 'Cancel', '< Prev', and 'Next >' buttons.

ISO Image File

You can choose a media type, i.e., ISO image, DVD, to create the boot environment media for recovery and cold backup of the system.

USB Device

IT Pro Creator guides you through every steps to create a USB boot media. You can choose a media type, i.e., USB flash memory, USB hard disk , USB SSD to create the boot environment.

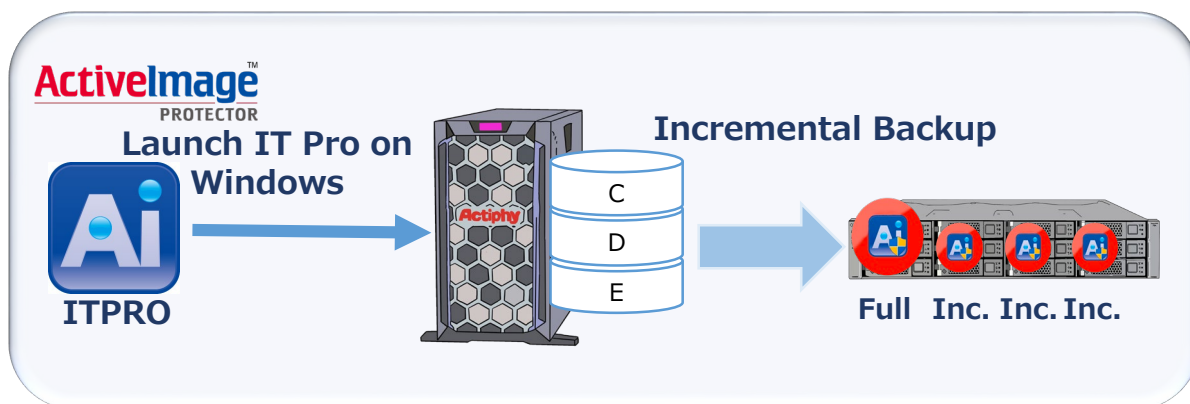
Exe. file

IT Pro EXE file can be created to run on Windows and use for backing up or restoring the system.

Fast and efficient incremental backup includes only blocks that have changed from the last backup.

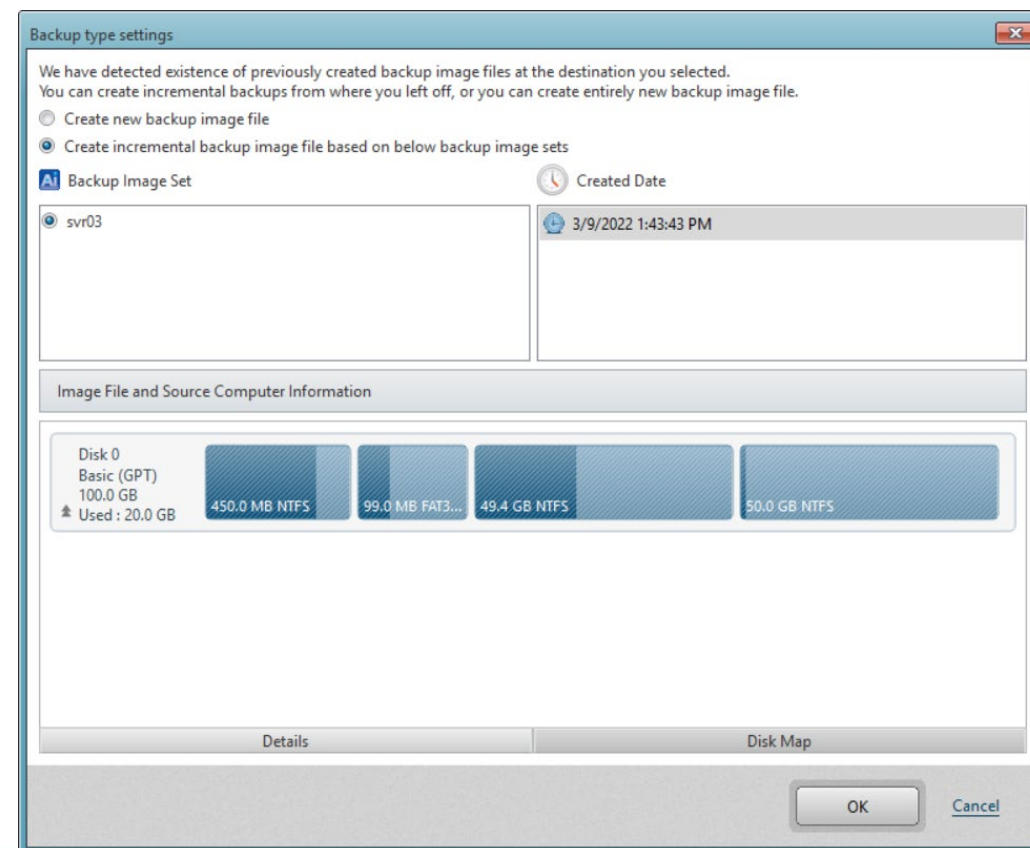
Fast and efficient incremental backup includes only blocks that have changed from the last backup. The incremental backup saves both process time and storage space. For example, when doing system maintenance, you can take a hot-imaging backup of a live server.

Incremental backup of IT Pro



When specifying the same destination folder as specified for the last backup task, you can select to run a new full backup or incremental backup task.

Select backup type in IT Pro dialog

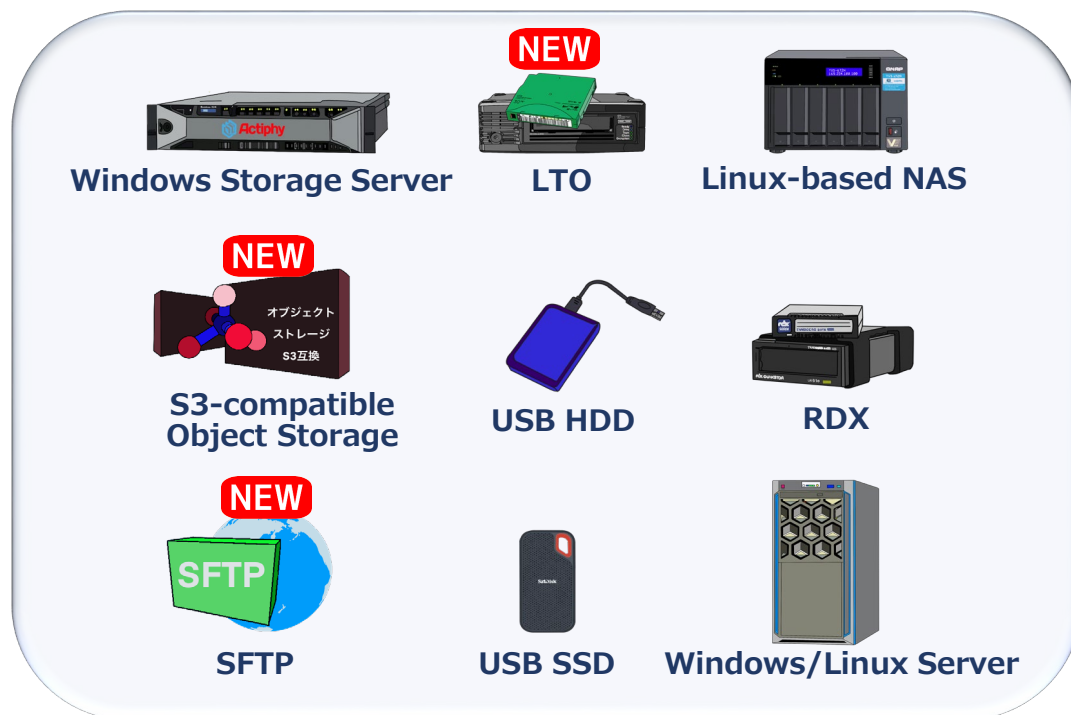


Flexibly select a backup destination depending on the system configuration.

Support for a variety of Storage Media

Save your backups to any available storage location, including **USB HDD, cloud object storages, etc., supporting a variety of system configuration and backup policies.**

A variety of Storage Media are supported



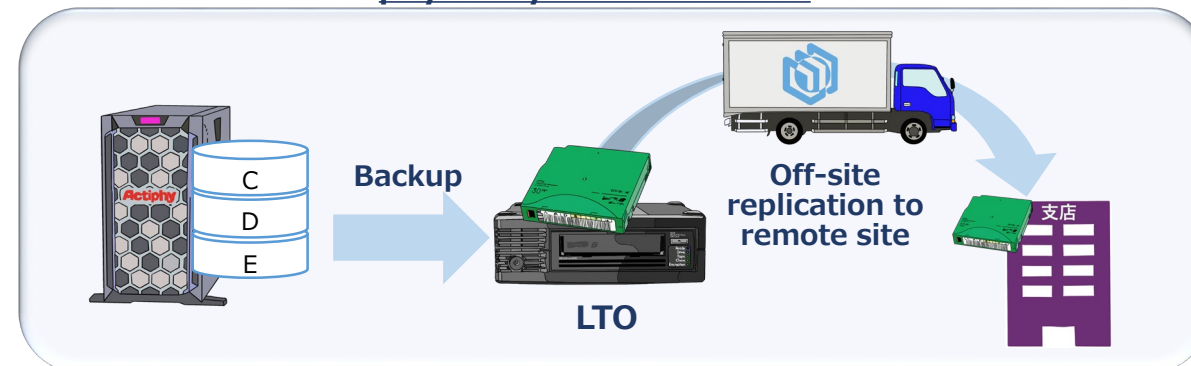
Save your backups to any available storage location **NEW**

Supported storages include **S3-compatible object storage, SFTP server and LTO tape devices** as backup destinations.

Backup systems directly to cloud storage



Backup data saved on LTO tape device can be physically isolated in safe



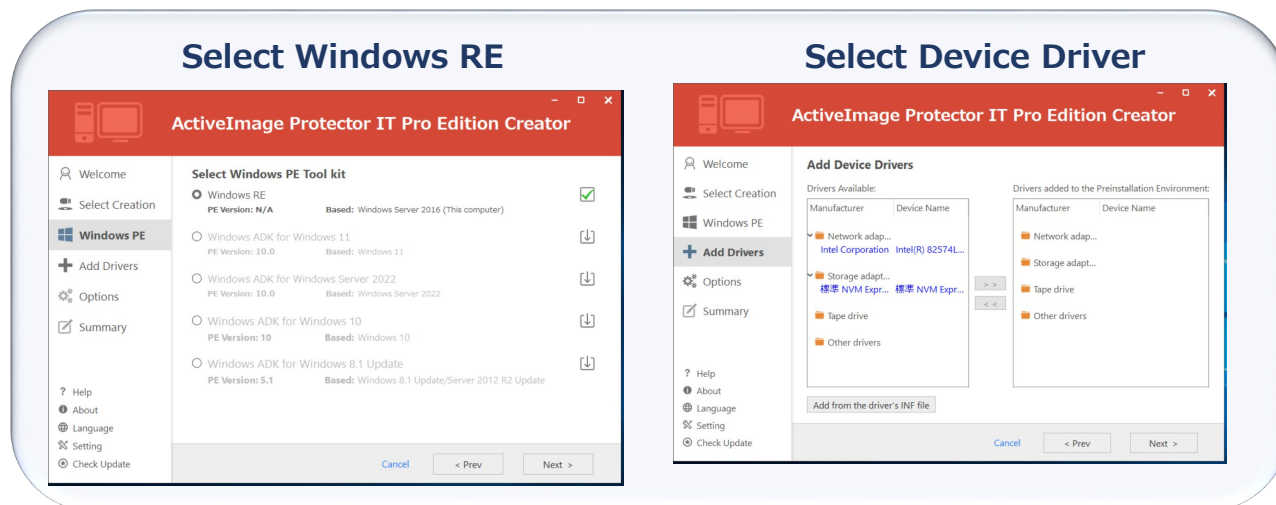
Enhanced convenience and reduced process time

Build boot environment without installation of Windows ADK

IT Pro Creator guides you through every steps to build boot environment using Windows RE (Windows recovery environment) without the need for installation of **Windows ADK** or **Windows PE**.

The required drivers are automatically detected and included in boot environment, which enhances the operating convenience and reduces overall field time.

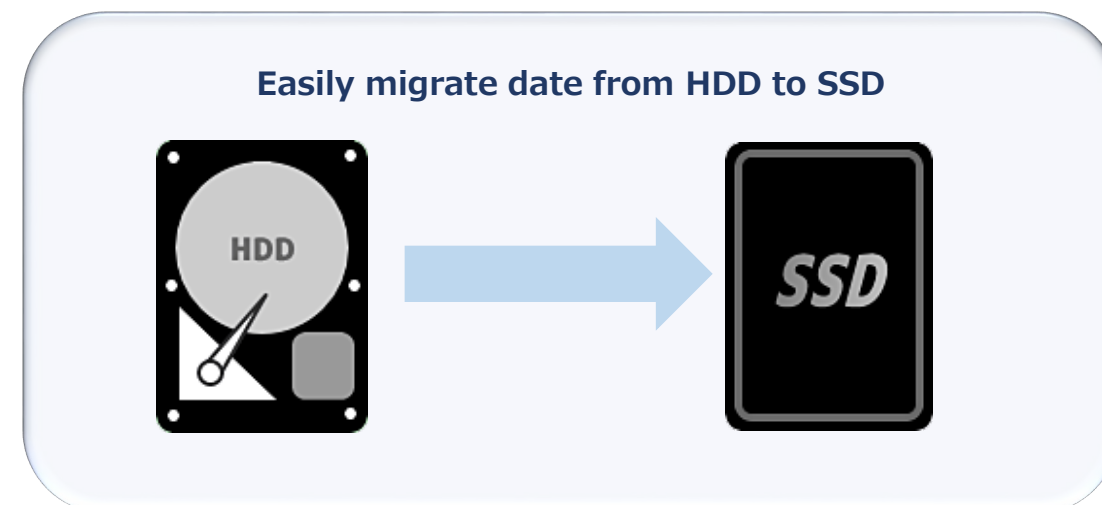
Windows-based BE Builder



Disk-to-Disk Copy

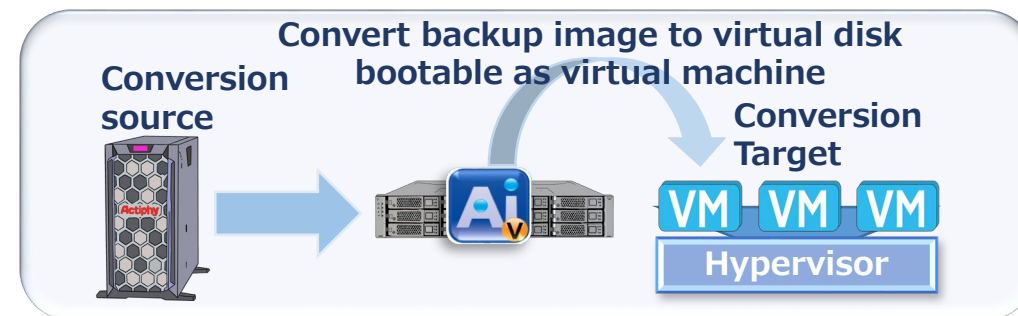
Disk-to-disk Copy is used when migrating data from a **hard disk to a large-capacity disk or to an SSD**. The Disk-to-disk Copy feature can select the entire disk or a specific volume to copy, or copy to a higher capacity disk or volume. Data volumes from different disks can be combined using disk-to-disk copy for a new single disk.

Disk-to-disk Copy Feature



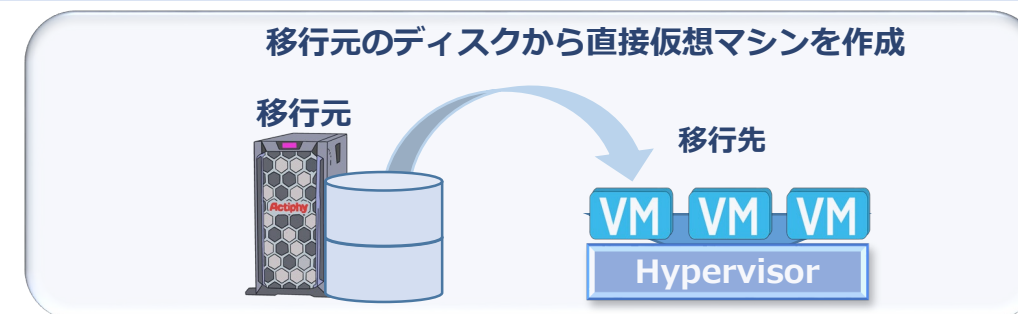
Virtual conversion utility is provided to convert a backup image file

Virtual conversion utility is provided to convert a backup image file to **virtual disk bootable as virtual machine**.



Direct conversion from a hard disk to a virtual disk

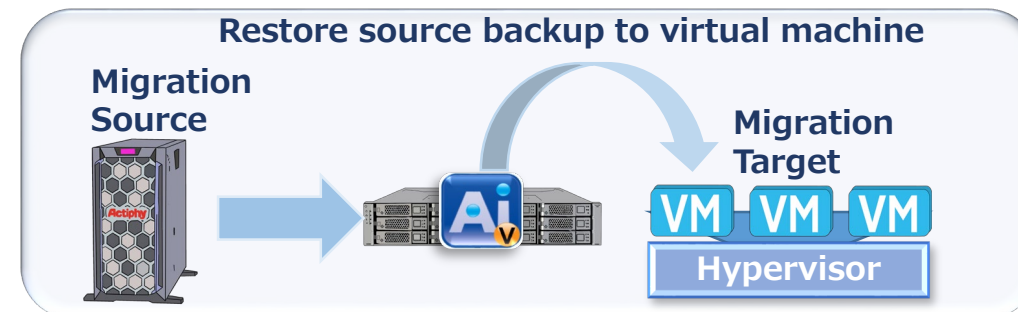
ActiveImage Protector's P2V conversion feature supports **direct conversion from a hard disk to a virtual disk bypassing P2V conversion from an image file** which saves the process time.



Restore source backup to virtual machine on target virtual host

ActiveImage Protector's restore feature supports **migration from source backup to virtual machine on target virtual host**.

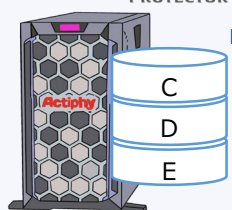
* When restoring backup directly to virtual machine on target virtual host, you need to create a backup by enabling [Make backup image file P2V ready] in Option setting.



Back up your entire hard disk including OS along with all your applications and data

Backs up **your entire machine, including Windows system, applications and data files**, while the machine is active and running.

**ActiveImage™
PROTECTOR**

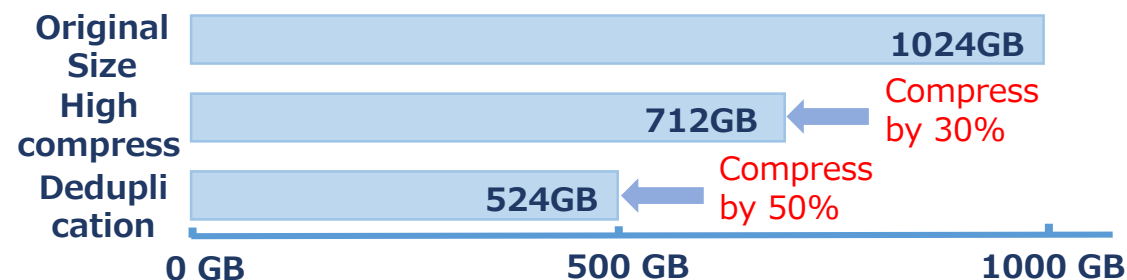


Backs up your entire machine, including the OS, applications and data files



Deduplication Compression reduces storage requirements

Our **Inline Data Deduplication Compression (IDDC)** feature eliminates duplicate data while simultaneously compressing it, resulting in a significant reduction in backup storage requirements and network load.



Fast Backup

ActiveImage Protector's fast backup can complete backup process. For example, backup of 1TB machine environment completes in about 2 hours and 30 minutes.

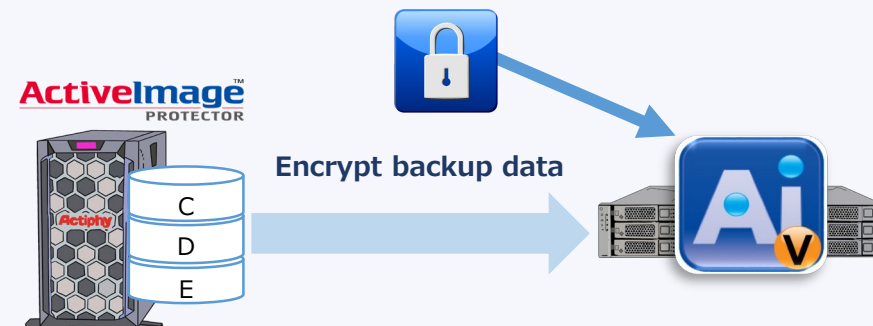
Backup 1TB machine environment

1TB / about 2 hours and 30 minutes (*1)

*1 : The time measured in our server environment.

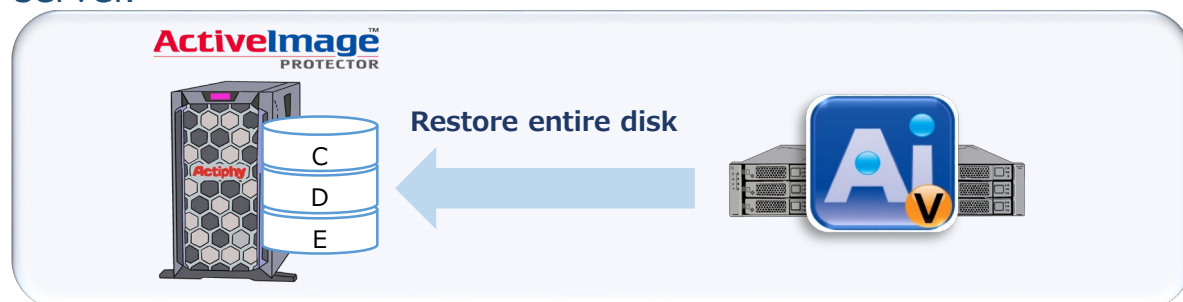
Encryption / password-protection of Backup Images

Enabling the encryption for the backup image file ensures that the backup file cannot be compromised. The backup image file can be password-protected by assigning a unique password.



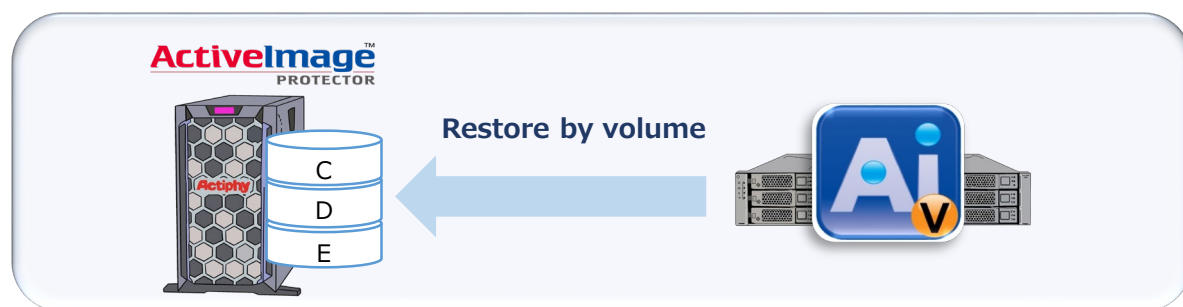
Restore the entire disk

Select the most up-to-date incremental backup file, specify the restore target disk and your system is restored to the **most updated state**. The restore target may be on-premise virtual environment, cloud environment as well as the original server.



Restore by volume

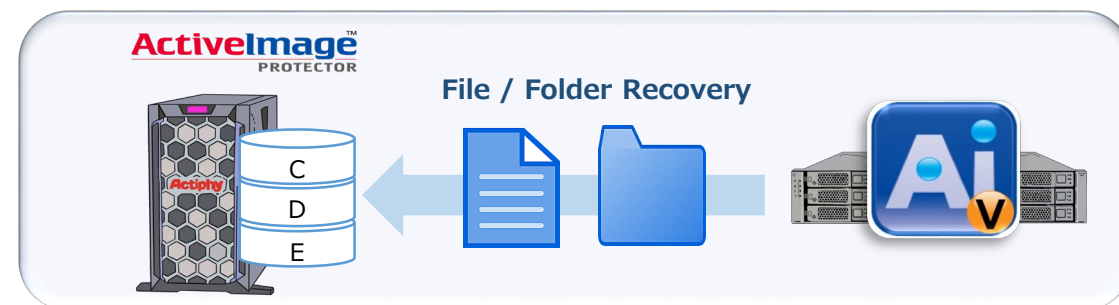
Restore a backup image of a specific recovery point to a specified volume. For example, **only "D:" drive can be selected from the data volume to restore**.



File / Folder Recovery

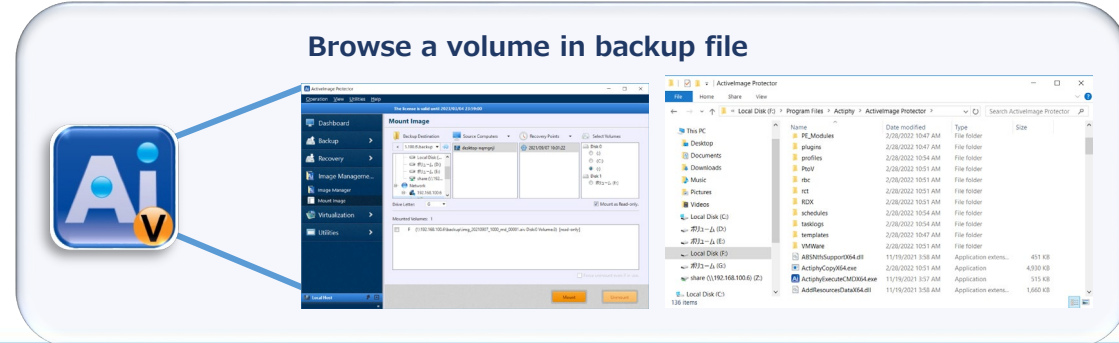
File / Folder Recovery

Granular point-in-time recovery of a file / folder is enabled. The stream information and access rights assigned to files are inclusively restored. When you only need specific files to restore in order to restart your duties, **File Recovery feature can provide you with flexible action**.



OImage Explorer

Installed as a Windows Explorer extension, Image Explorer allows you to browse and copy files and folders from **ActiveImage Protector image file** without requiring a full image mount, saving your time and system resources. This will allow you to restore individual files or folder.





For your inquiry, please contact:
Actiphy Inc.
E-mail: global-sales@actiphy.com
Tel: +81-3-5256-0877



www.actiphy.com